

Active Resource Integration Project Overview and Roadmap

National Grid IWG Presentation
December 15, 2022

National Grid is the sponsor of this presentation. Neither PSEG Long Island nor the Long Island Power Authority make any recommendation or express any opinion with respect to the recommendations or conclusions contained in this presentation

nationalgrid



Introduction to Active Resource Integration



ARI: Active Resource Integration is critical to enable National Grid to increase distributed generation (DG) interconnections by actively managing DG to mitigate peak capacity constraints



This project was filed within the Niagara Mohawk Power Corporation rate case to demonstrate capabilities of increasing distribution solar deployment in areas with low hosting capacity via curtailment



This pilot is one of many steps in advancing National Grid's DERMS platform strategy while addressing current and near-term DER customer challenges



Active Resource Integration will be introduced initially to solve a single substation thermal constraint to test the capabilities of the solution and the viability of this technology as an alternative interconnection solution



This pilot will be tested at one location within National Grid Upstate NY Service Territory

Candidate location historically challenged to interconnect more DG

1. Peterboro substation is in NMPC load zone C-2
2. The substation is a 2 bank, firm capacity design with 8 feeders connected
3. The current hosting capacity of the station is (27.5 MVA) with (27.5) MW of firm Distributed Generation installed
4. Active Resource Integration is looking to connect an additional 15 MW [54% increase over current hosting capacity criteria] of flexible distributed generation to the Peterboro Substation. A substation constraint was chosen as it is generally a more cost-efficient solution than targeting a feeder constraint.
5. The application of ARI applied at this location will defer the need for a substation bank upgrade. This will allow for the additional 15 MW to connect at the substation for a more feasible cost by receiving dispatch from NG and actively curtailing their flexible projects

Critical that customers can model how alternative interconnection options may impact their project

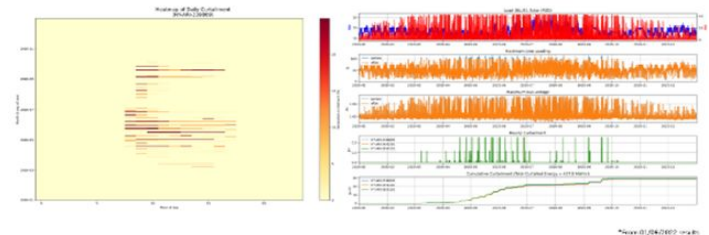
From early stakeholder engagement we heard:

1. Developers need sufficient information on National Grid's curtailment analysis to understand project impacts prior to proceeding with an interconnection agreement.
2. Developers need to provide sufficient information to the project's financiers to ensure they are comfortable that the project will generate sufficient revenues to service debt.
3. National Grid needs flexibility to curtail projects when necessary to maintain system reliability.

Therefore, we plan to provide pilot participants:

Results of multiple studies under standard study scenarios using the methodology detailed below. The results will show:

- A detailed description of the constraint being studied
- Hourly curtailment expected during the pilot period
- Hourly curtailment expected with post pilot (no new flexible projects interconnected)
- Hourly curtailment expected at total flexible DG capacity enrolled to maintain target max curtailment

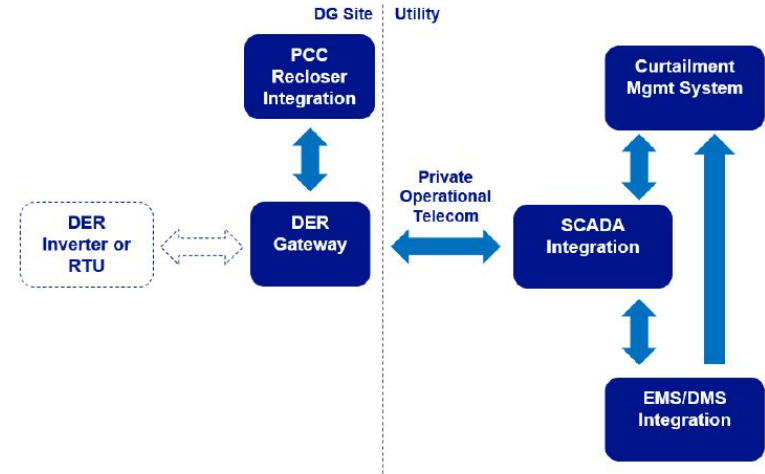


Technology is key to deploy actively managed connection solutions

Functionality to be implemented, tested and refined as part of this pilot:

- Real-time communication of automated dispatch signals (e.g. export limits) to DG on-site controller
- Loss of communication detection between centralized utility system and DG
- Integration with Company utility PCC recloser for underperformance protection assurance
- Step towards standardizing dispatch communications and interface with DER (e.g. IEEE 1547-2018, interface documents, data needs)

Feasibility evident in peer utility experience and reviewed with industry experts:



Deployment at Company owned Solar site (MA)



Deployment at a non-wire alternative site (NY)

Alignment with National Grid's DERMS platform strategy

ARI will inform National Grid's approved DERMS investigation project from its NMPC rate case and overall DERMS platform development

**Scale
and
Evolve**

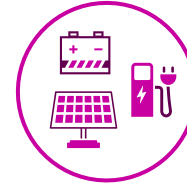
2022-2024*

ARI Pilot (Minimum Viable Product)

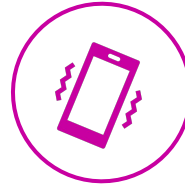
- Develops alternative connection studies, documentation and integration practices with standardization in mind
- Automates real-time operational dispatch of DER for system thermal constraints
- Gains insight learned from managing initial participant sites



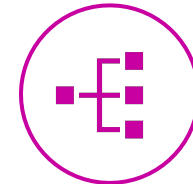
**Expand product coverage
across our network**



**Diversify interconnection
offering to other DERs**



**Improved customer and
operator awareness**



**Deeper integration with utility
enterprise systems**

national**grid**

Flexible Interconnection

Comparing the Rules of Curtailment and Estimating Curtailment

IWG Meeting
December 15, 2022



www.epri.com

© 2022 Electric Power Research Institute, Inc. All rights reserved.



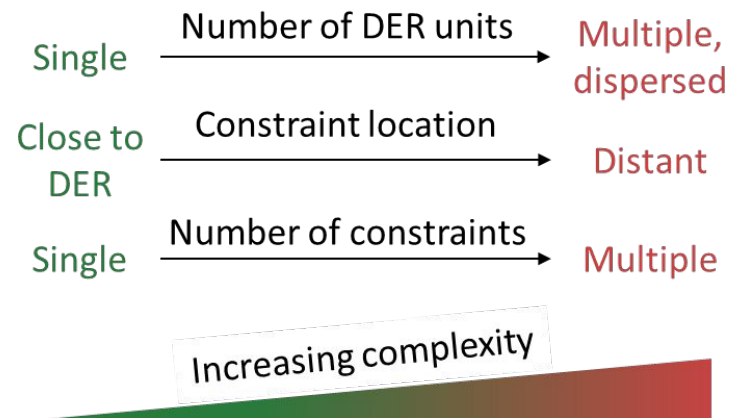
Rules of Curtailment

Basic Strategies

- Time-differentiated maximum export schedules
- Binary logic (export / no-export)

Advanced Curtailment Strategies

- Minimize and distribute curtailment equitably across multiple DERs
- LIFO and Pro-rata are most common strategies used by early adopter utilities to date.

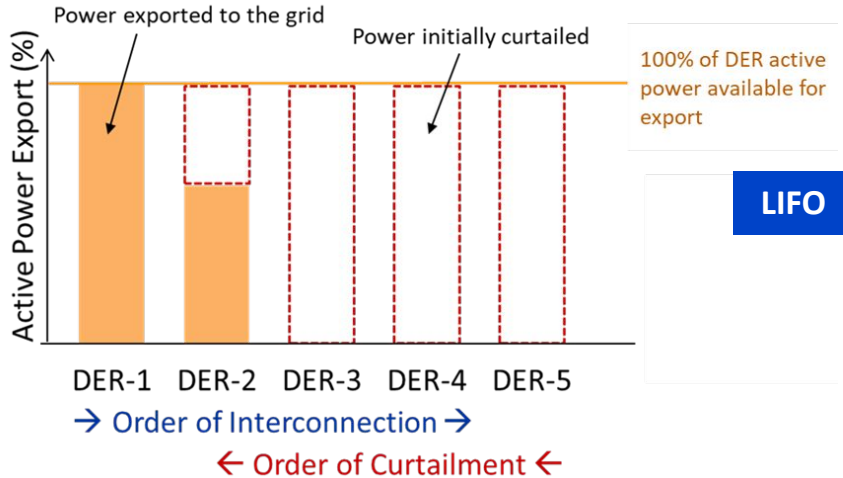


Curtailment Logic	Description
Last-in-first-out (LIFO)	DER units are curtailed in the reverse order in which they applied for connection to the network.
Pro-rata	All DER units are curtailed in proportion to each DER's contribution to network constraints.
Competitive bidding	DER units with the lowest bids to use network capacity are required to curtail.
Emissions-based priority	DER units with the highest emissions are curtailed first.

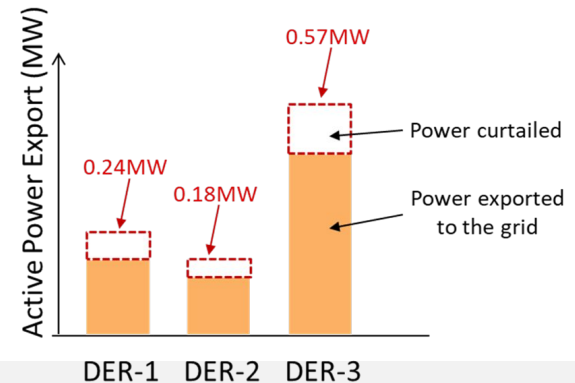
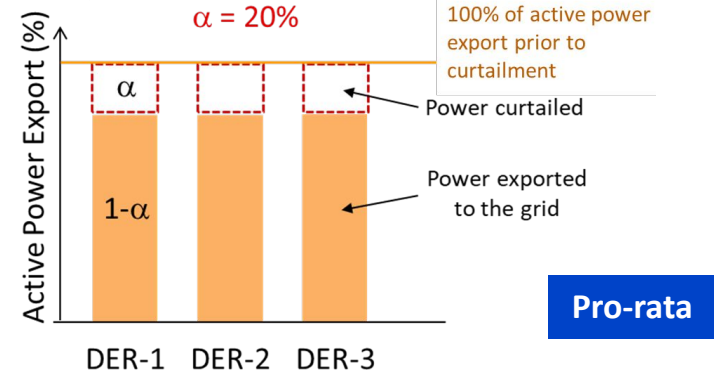
Rules of Curtailment

Last-In-First-Out (LIFO) vs. Pro-Rata

DER generators contributing to a constraint are curtailed in the **reverse order in which they applied for connection to the network.**



DER generators contributing to a constraint are curtailed **proportionally to a reference parameter** (e.g, active power export right before curtailment)



Rules of Curtailment

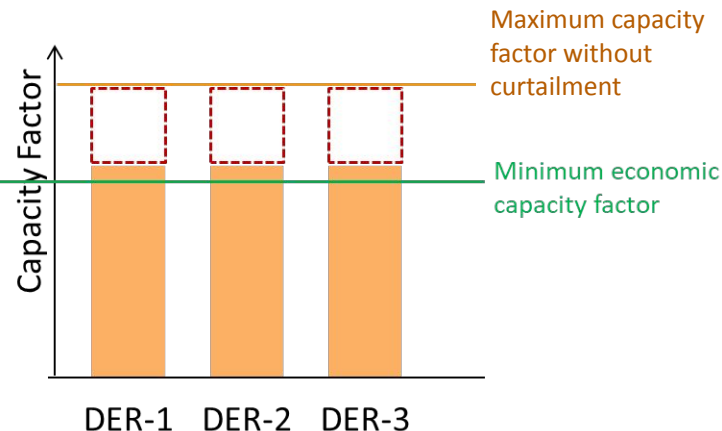
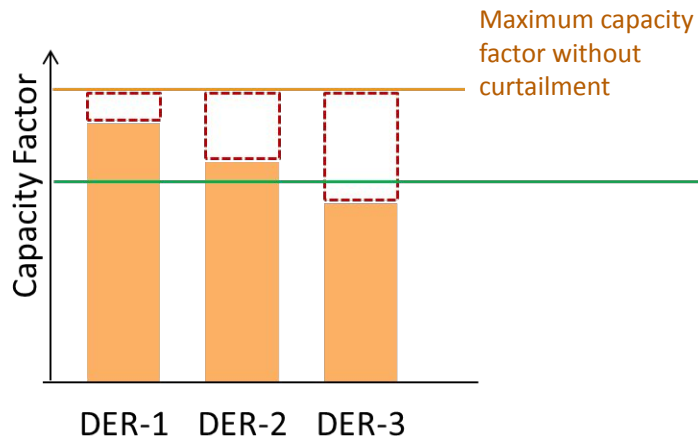
Comparison: LIFO vs. Pro-Rata

LIFO

- Higher financial certainty for developers (early connectors)
- Potential for gaming of priority rules

Pro-rata

- Potential for greater DER interconnection and higher network utilization
- Shared incentives to co-finance upgrades



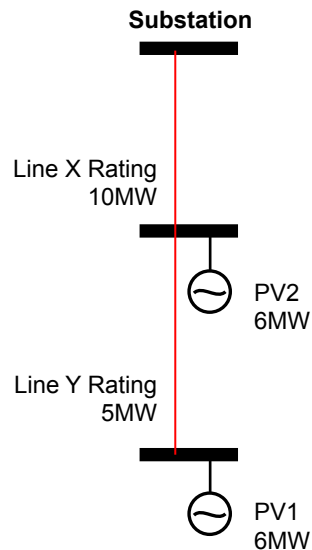
For more information: EPRI white paper, [Principles of Access for Flexible Interconnection – Rules of Curtailment](#)

Coordinated Curtailment of Multiple DERs under Multiple Constraints

An Illustrative Simple Example

LIFO Priority Order: PV1 > PV2

(i.e., PV2 will be curtailed before PV1)



Case 1

Constraint Evaluation	Curtailment (MW)		Generation (MW)	
	Δ PV1	Δ PV2	PV1	PV2
Line X	0	2	6	4
Line Y	1	0	5	4

Case 2

Constraint Evaluation	Curtailment (MW)		Generation (MW)	
	Δ PV1	Δ PV2	PV1	PV2
Line Y	1	0	5	6
Line X	0	1	5	5

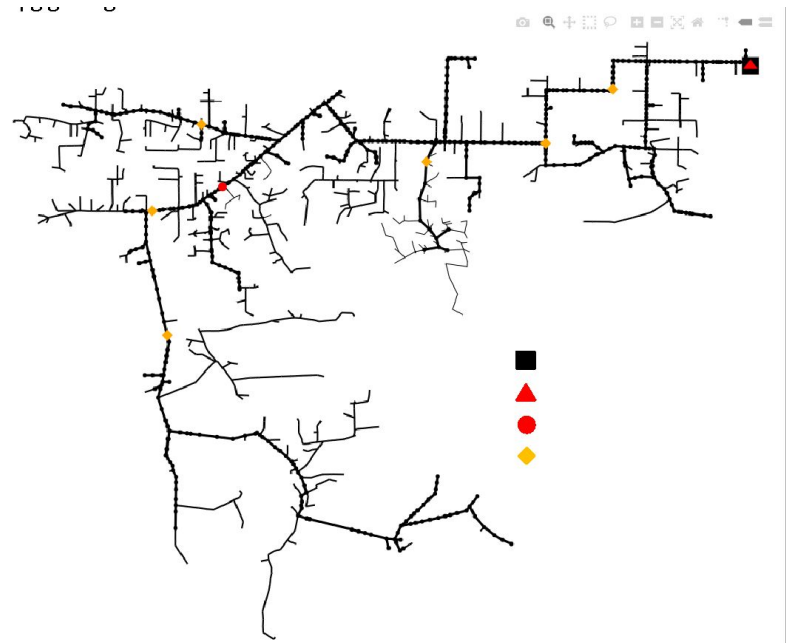
Sequential evaluation inconsistent, non-optimal result

Coordinated Curtailment of Multiple DERs under Multiple Constraints

Case Setup

- 8 feeders from one substation
- 4 Pilot PV installations considered for ARI control
- Both thermal and voltage constraints evaluated on
 - Substation transformers
 - 1500 mainline buses
 - 1600 mainline lines

PV Plant ID	Network ID	Rated kVA	Type
DER a	Feeder 2	2,900	Firm
DER b	Feeder 2	4,000	Firm
DER 1	Feeder 3	5,000	Flex
DER c	Feeder 4	5,000	Firm
DER 2	Feeder 4	5,000	Flex
DER d	Feeder 5	2,000	Firm
DER 3	Feeder 5	5,000	Flex
DER e	Feeder 6	5,000	Firm
DER f	Feeder 7	3,250	Firm
DER g	Feeder 8	3,000	Firm
DER 4	Feeder 8	5,000	Flex



** Not the real circuit diagram. Only shown for illustration purpose.*

QSTS Assessment using Utility Provided Annual Profile Data

Coordinated Curtailment of Multiple DERs under Multiple Constraints

Results

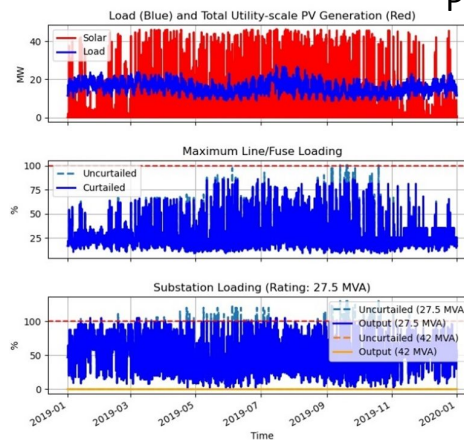
Dispatch Scheme	Constraint Scenario	N-1 [sub Tx ²]	Flexible DER PF	Annual Energy Curtailed (%)				
				DER 1	DER 2	DER 3	DER 4	Overall
Pro-rata	Thermal ¹	N	Unity	0.0	0.0	0.0	0.0	0.0
Pro-rata	Thermal	Y	Unity	2.6	2.6	2.6	2.6	2.6
Pro-rata	Overvoltage	N	Unity	0.5	1.4	0.0	14.7	4.1
Pro-rata	Overvoltage	N	Non-unity	0.0	0.0	0.0	0.0	0.0
LIFO	Thermal	Y	Unity	0.0	0.2	2.0	9.7	3.0
LIFO	Overvoltage	N	Unity	0.1	2.1	0.4	15.4	4.5
Local (Annual ³)	Thermal	Y	Unity	16.7	16.4	16.6	16.4	16.5
Local (Monthly ⁴)	Thermal	Y	Unity	11.7	11.6	11.7	11.6	11.7

¹ Evaluated on both substation transformers and feeder lines

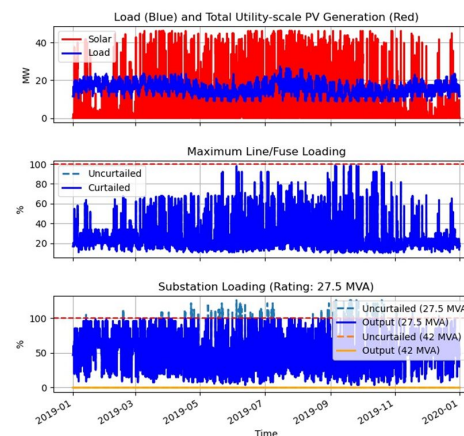
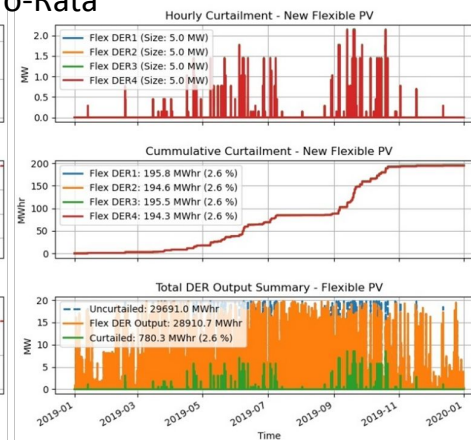
² The larger of two substation transformers out of service

³ One fixed export limit applied to each DER throughout the whole year

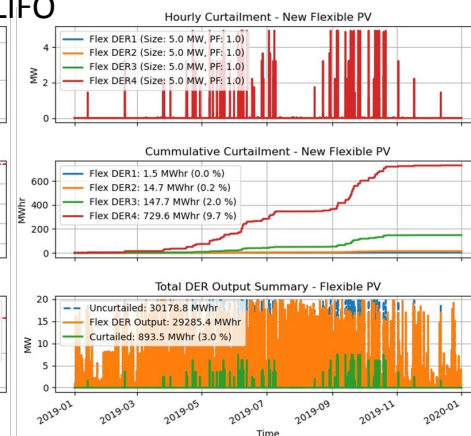
⁴ Fixed export limit updated each month



Pro-Rata



LIFO





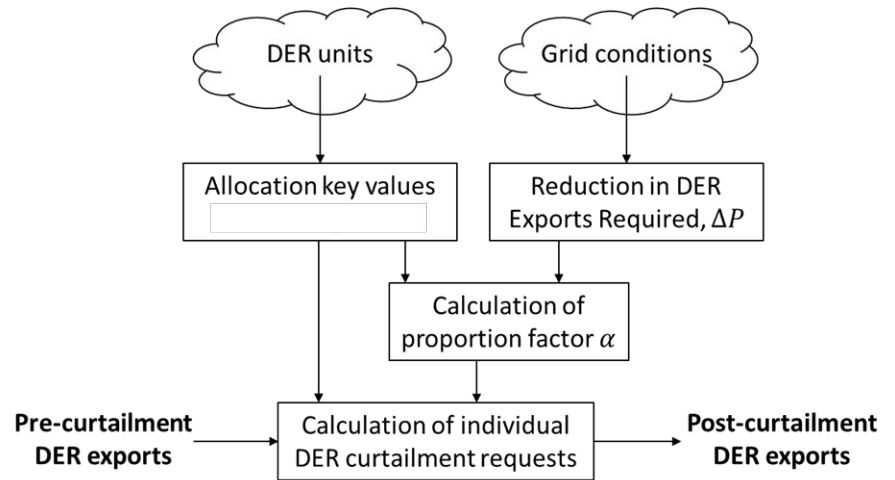
Backup Slides

Rules of Curtailment

Pro-Rata – Curtailment Calculations

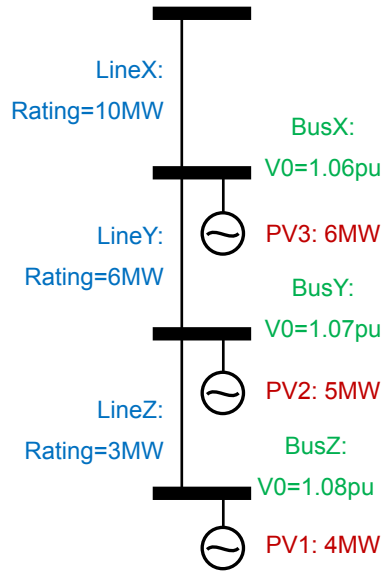
$$\text{DER Active Power Curtailed} = \text{Proportion Factor } \alpha \text{ (same for all DERs)} \times \text{Allocation Key Value (specific to each DER)}$$

- Examples of **allocation keys**:
 - Active power export
 - Maximum active power available for export
 - DER nameplate
 - *Combination of multiple factors*
- **Proportion factor α**
 - Updated every time a curtailment event occurs, to ensure total export reduction needed is met



Coordinated Curtailment of Multiple DERs under Multiple Constraints

Problem Formulated as QP Optimization



$$\min f(x) = q^T x + \frac{1}{2} x^T Q x$$

$$q = \begin{bmatrix} 0 \\ 0 \\ 0 \end{bmatrix} \quad Q = \begin{bmatrix} 1 & 0 & 0 \\ 0 & 1 & 0 \\ 0 & 0 & 1 \end{bmatrix}$$

$Bx \leq b$, x refers to curtailed power

$$\begin{array}{l} \text{Line X} \\ \text{Line Y} \\ \text{Line Z} \\ \text{Bus X} \\ \text{Bus Y} \\ \text{Bus Z} \\ \text{PV1} \\ \text{PV2} \\ \text{PV3} \end{array} \begin{bmatrix} -1 & -1 & -1 \\ -1 & -1 & 0 \\ -1 & 0 & 0 \\ -0.002 & -0.002 & -0.002 \\ -0.004 & -0.004 & -0.002 \\ -0.006 & -0.004 & -0.002 \\ 1 & 0 & 0 \\ 0 & 1 & 0 \\ 0 & 0 & 1 \end{bmatrix} \begin{bmatrix} x_1 \\ x_2 \\ x_3 \end{bmatrix} \leq \begin{bmatrix} 10 - 15 \\ 6 - 9 \\ 3 - 4 \\ 1.05 - 1.06 \\ 1.05 - 1.07 \\ 1.05 - 1.08 \\ 4 \\ 5 \\ 6 \end{bmatrix}$$

	PV1	PV2	PV3	Total
Curtailment (MW)	3.21	2.14	1.07	6.43
Generation (MW)	0.79	2.86	4.93	8.57

Automated to Work with Commercial Software (e.g., CYME)

A blue-tinted photograph of four diverse professionals standing together. From left to right: a man with curly hair and glasses in a white lab coat; a man with glasses in a white lab coat; a woman wearing a white hard hat and a dark polo shirt; and a man with glasses and a beard in a light-colored button-down shirt. They are all smiling and looking towards the right. The background is a solid blue color.

Together...Shaping the Future of Energy™