



Energy Efficiency Programs

2025 Annual Partner Meeting
and Awards Presentation



January 30, 2025



Welcome

John Franceschina
Energy Efficiency Program Director



Agenda

- **Opening Remarks – Mike Voltz**
- **2024 Year in Review – John Franceschina**
- **Commercial Program Updates – Wendy Smith**
- **Residential Program Updates – Brian Loughlin**
- **Partner Program Updates – Alex Valentino**
- **Q & A (Index Cards on Tables)**
- **Partner Awards – Josh Ebner / Matt Connors**





Opening Remarks

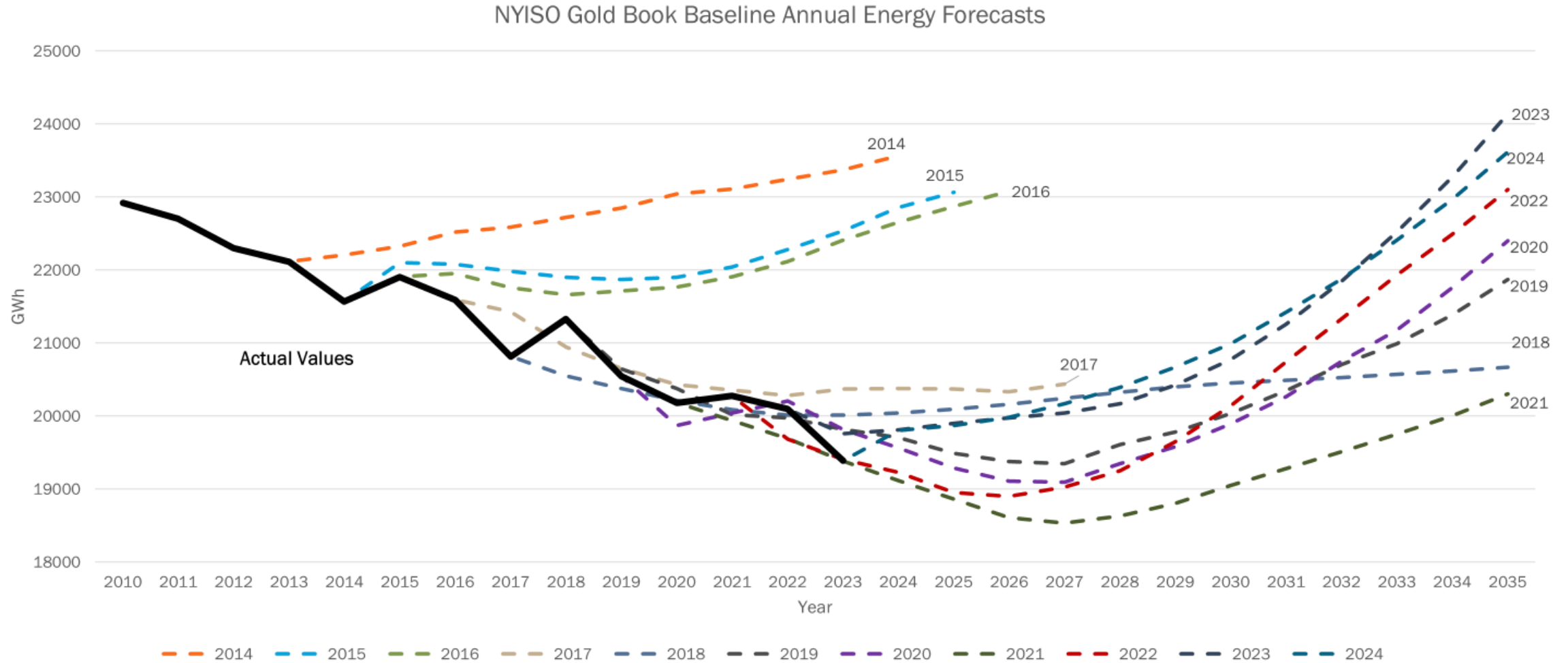
Michael Voltz

Director, Energy Efficiency and Renewables
PSEG Long Island



Success Story: Annual Energy Forecast

- Long Island's Annual Energy Forecast increases while peak demand decreases
- Optimizes grid use





2024 Year in Review

John Franceschina
Energy Efficiency Program Director



2024 Residential Highlights

12,167
Participants
HC/HP/REAP

\$28M paid in
Rebates &
Incentives

50% of
Rebates &
Incentives
in DAC and LMI

391,693
MMBTU
Savings



2024 Commercial Achievements

1,923
Participants

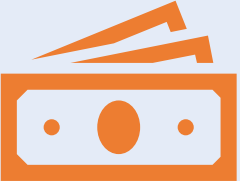
\$22.2M paid
in Rebates &
Incentives

28% of
Rebates in
DAC

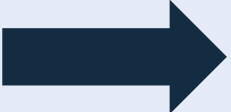
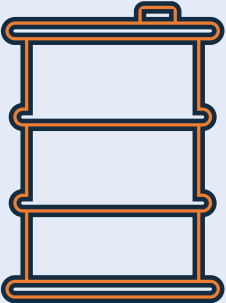
314,421
MMBTU
Savings



2024 Program Impacts



\$325M invested in the local economy (Nassau, Suffolk and the Rockaways)



**Total Carbon Savings: ~ 85,000 Metric tons
Heating Oil Equivalent: 6.5 million gallons**



Energy Savings Measures Deployed Supporting over 100,000 Customers



2025 Commercial Program Updates

Wendy Smith
Associate Director



Your Energy Consultant *is ready to help!*

PSEG Long Island Zone Map



PSEG Long Island Service Area



Wendy Smith, Outreach Associate Director
e: Wendy.Smith@pseg.com
c: 516-497-1354

PSEG Long Island Consultants for Small, Medium Businesses



Zones 1 & 3
Brittany Degel
e: Brittany.Degel@pseg.com
c: 516-246-3203



Zone 2
Andrew Cacioppo
e: Andrew.Cacioppo@pseg.com
c: 516-580-5598



Zone 4 & 5
Felix Ramos III
e: Felix.Ramos2@pseg.com
c: 631-316-2420

PSEG Long Island Energy Consultants by Managed Accounts



Maureen McDonald
e: Maureen.McDonald@pseg.com
c: 631-662-3122

- Nursing Homes
- Real Estate/Developers
- Govt – Federal, State, Public Services, Water Districts
- LIRR/MTA & Malls



Doug Cahill
e: Douglas.Cahill@pseg.com
c: 646-457-8452

- Govt – Counties, Towns, Cities, Villages
- Telecommunications & Banks
- Manufacturing
- K-12 Schools – Suffolk County



Steven Orman
e: Steven.Orman@pseg.com
c: 516-780-5414

- Universities and Colleges
- National Key Accounts
- Hospitality
- K-12 Schools – Nassau County
- K-12 Schools - NYC (Rockaways)



Matt Connors
e: Matthew.Connors@pseg.com
c: 631-418-4166

- Hospitals



Contact information for your PSEG Long Island Energy Consultant is shown in the map above. If you prefer, you can call us at 1-800-692-2626 or scan the QR code.

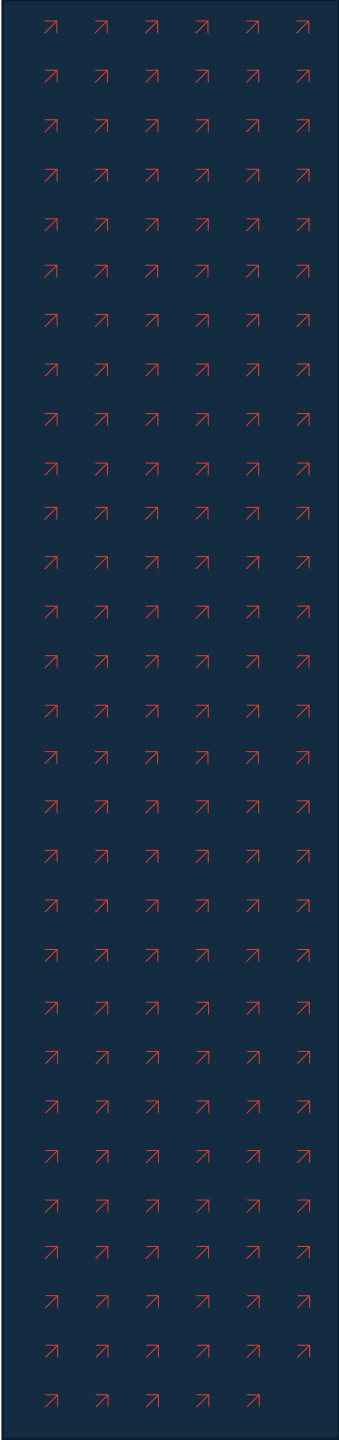


Commercial Energy Assessments (CEA's)

A perfect place for customers to start...an opportunity for Partners to obtain Leads

- CEA's create lead opportunities for partners
- Customer inquiries are field validated by an Energy Consultant
- Customers are asked if they would like to receive estimates
- Partners are assigned leads on a rotational basis

If interested, please ask one our team members



Lighting Program Updates

Comprehensive Lighting

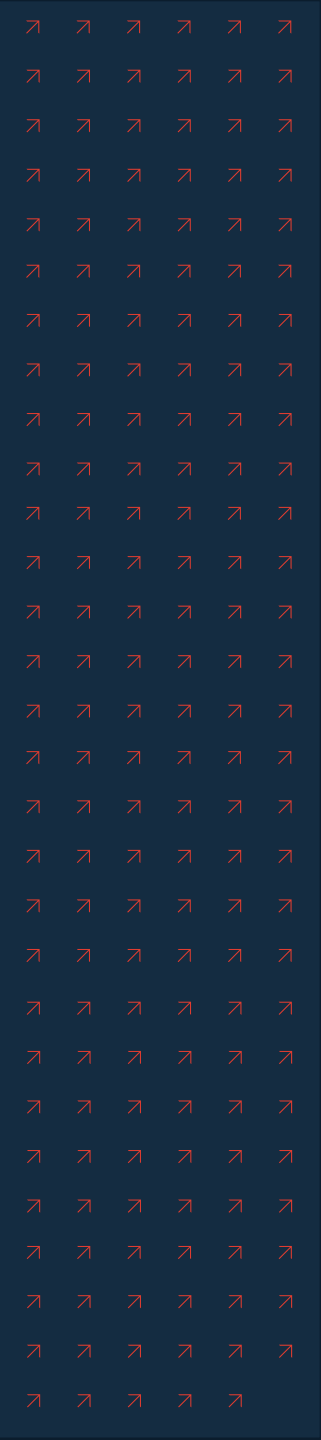
- Rebates remain at \$0.22/kWh (except lamps and tubes)
- Adjusted some Hours of Operations to align with the 2025 NYS TRM (Technical Resource Manual)

Fast Track Lighting

- Rebate Cap Remains at \$5,000

Last Call for all Lighting

- All closing documents due 12/1/2025



Commercial Heat Pump Program Updates

Whole Building Application

- Heat Pumps must be **primary** heat source
— Includes ASHP, VRF and all Geothermal
- Submitted through our Custom Application
- NYS Clean Heat Calculator is required
- All projects must be pre-inspected

Supplemental/Partial Building Application

- Projects submitted using our HVAC Application



Custom Space Heating and Envelope Measures				
Project Type	Rebate/Type	Rebate	Disadvantaged Community Rebate**	Rebate Cap (per Building)
New Construction Heat Pump Scenario*	\$/MMBTU	\$50/MMBTU	n/a	\$100,000
Decommissioned Fossil Fuel System Heat Pump Scenario	\$/MMBTU	\$150/MMBTU	\$200/MMBTU	\$200,000
Building Weatherization	\$/MMBTU	\$150/MMBTU	\$200/MMBTU	n/a

*Includes Electric Replacements and Supplemental Heating Scenarios

**Disadvantaged Community (DAC) rebates are available to customers who are located within a Disadvantaged Community; DAC status can be checked here:

Multi-Family Program Updates

New for 2025

- Existing Building Multi-Family Rebate Increase
 - Existing fossil fuel system must be decommissioned
- Adjusted Heat Pump rebate structure to \$/Dwelling Unit
- Must submit NYS Clean Heat Calculator
- In-Unit HPWH rebate increase → \$1,200/unit



Multi-Family Space Heating In- Unit Heat Pumps			
Project Type	Rebate/Dwelling	Disadvantaged Community Rebate/Dwelling*	Rebate Cap (per Building)
New Construction	\$500/Dwelling	\$500/Dwelling	\$100,000
Existing Building**	\$4,000/Dwelling	\$5,000/Dwelling	\$200,000
Geothermal Existing Building	\$3,000/Dwelling	\$5,000/Dwelling	\$200,000

Multi-Family Space Heating Common Area Heat Pumps				
Project Type	Rebate/Type	Rebate	Disadvantaged Community Rebate**	Rebate Cap (per Building)
New Construction Heat Pump Scenario*	\$/MMBTU	\$50/MMBTU	\$50/MMBTU	\$100,000
Decommissioned Fossil Fuel System Heat Pump Scenario	\$/MMBTU	\$150/MMBTU	\$200/MMBTU	\$200,000

Multi-Family Program New Construction

Project Requirements

- A Building Permit must be submitted for all projects
- Project must be completed and closing documents submitted by Building Permit Expiration Date
 - If Building Permit expires, please contact PSEG Long Island to discuss next steps
- Project must be completed and closing documents submitted within 365 days of pre-approval



Technical Assistance Program Updates

Engineering Study Application

- Cost Study Cap remains at 50%
- Rebates capped at \$20,000

LEED Application

- Cost Cap at 50% - Max Rebate \$100,000

Whole Building Application

- Energy Model Cost Cap at 50% - Max Rebate \$50,000
- Whole Building Cost Cap at 50% - Max Rebate \$2M



Other 2025 Commercial Program Updates

Standard Rebate Application Version 1.0

- Discontinued Measures → Pool Equipment, Lawn Equipment, Golf Carts
Forklifts are still eligible for a rebate

HVAC Rebate Application Version 1.0

- New Measure → Kitchen Demand Ventilation Control \$560/Unit

Disadvantaged Communities (DAC) Rebates

- Customers located in a DAC may be eligible for up to 25% increased rebates
 - *Technical Assistance is not included*
- Commercial workbooks customer tab includes a dropdown for you to select if a project is located in a DAC

Located in a Disadvantaged Community*?

*"DAC" may be eligible for up to 25% increased rebates

<https://www.nyserda.ny.gov/ny/Disadvantaged-Communities>



2025 Commercial Program Updates (cont'd)

Operating Hours

- Partial Building Operating Hours updated to emphasize heating hours
- HVAC Operating Hours → Updates made to Community College, High School, Hospital, Hotel, Large Office, Large Retail, University
- Please note, the changes in operating hours will result in different rebates/savings between the 2025 application and previous versions

Baseline Efficiencies

- Slight updates to EER and IEER baseline values for Air Conditioning and Air-Cooled units

ERV and HRV Hours Inputs

- Operating Hours per Day and Operating Days per Year inputs now required



Need Assistance?

- Visit www.psegliny.com
- Contact our Infoline at 800-692-2626 (M-F 8 a.m. to 5 p.m.)

Project/Program Specific Inquiries (Email)

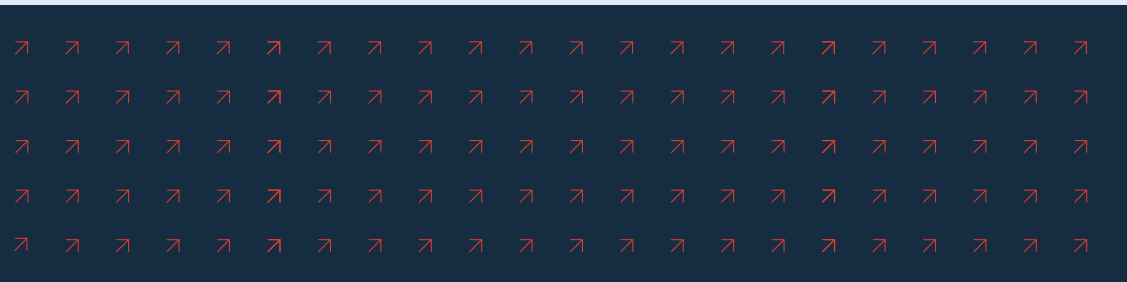
- Commercial & Multi-family → CEPLI@PSEG.com
- Partner Support → PSEGPartnerSupport@trccompanies.com

Contractor/Customer Open House

- Every Friday from 9 a.m. to 10 a.m.

395 North Service Road, Melville (Ste 409)

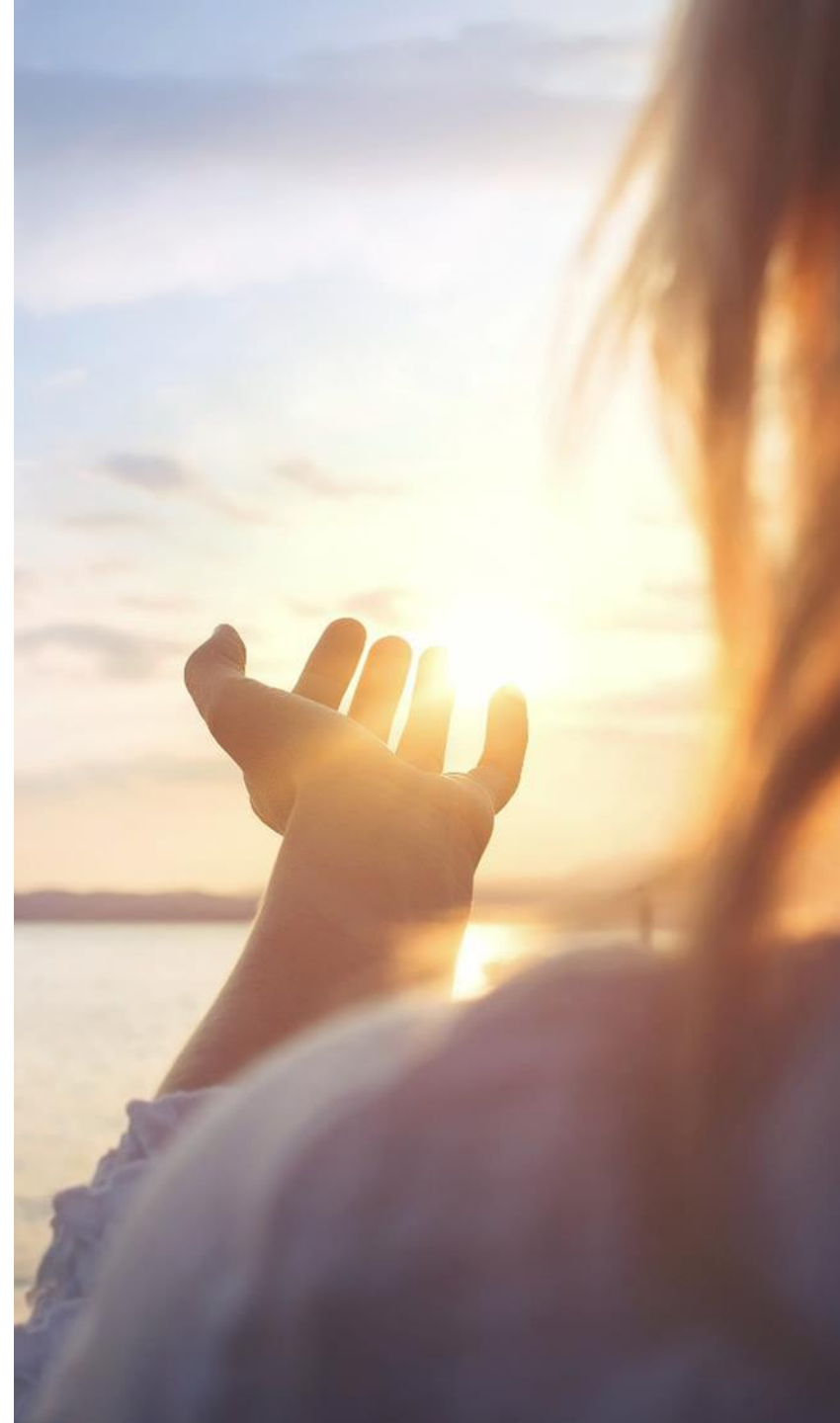
Or on Teams use QR code to access →





2025 Residential Program Updates

Brian Loughlin
Associate Director



2025 Residential Programs



- Home Comfort
- Geothermal
- Home Energy Assessments
- Home Performance with ENERGY STAR®
- Energy Efficient Products
- Residential Energy Affordability Partnership

The Team – Residential Programs



Residential Energy Affordability Partnership

Linda Eddy – Program Administrator

- e: Linda.Eddy@pseg.com
- 631-327-9381



Geothermal

Hamid Muneeb – Program Coordinator

- e: Hamid.Muneed@pseg.com
- 631-885-7540



Energy Efficient Products

Dorothy Weisblatt – Program Administrator

- e: Dorothy.Weisblatt@pseg.com
- 631-834-0022



Home Performance with ENERGY STAR®

Joshua Ebner – Program Manager

- e: Joshua.Ebner@pseg.com
- 631-479-7582



Home Comfort

Jonathan Tham – Program Administrator

- e: Jonathan.Tham@pseg.com
- 516-289-6960



Residential Programs 2025 Focus

- Home Comfort /Home Performance Program – Market rate/DAC/LMI Rebates available.
- Cold Climate Air Source and Air to Water Heat Pump Rebates. Combination with HPwES weatherization and HPWH's!
- Continue to host and support resources for training and tool cost reimbursements to help grow your business.
- Improved the Partner Online Application for easier project submittal and the Re-Enrollment process for participation.
- Expand Partner Online Application for easier processing.
- Continue Co-Op and Co-branding cost sharing participation benefits.
- Expand your horizons – Clean Heat Connect, Empower +, IRA/HEAR rebates/tax credits.



Home Comfort Program

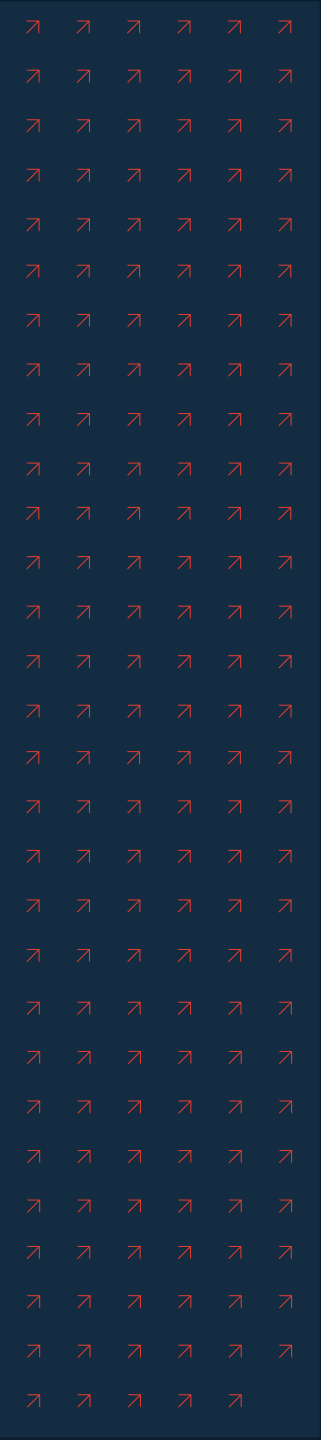
Rebates are available for

- Cold Climate Ducted and Ductless Heat Pumps
- Ground Source Heat Pumps
- Domestic Hot Water Heat Pumps
- Air to Water Heat Pumps



Whole House Heat Pump Projects

- **Market Rate:** Total rebates will not exceed 70% of total project cost OR \$5,000 in total rebates.
- **Disadvantaged Communities:** Total rebates will not exceed 70% of total project cost OR \$6,250 in total rebates.
- **Income Eligible Rate:** Total rebates will not exceed 100% of total project cost OR \$11,000 in total rebates.



2025 Home Comfort Program

Program Offerings (NEW for 2025)

- Discontinued rebates for tune ups.
- No Equipment Only rebates
- Freeze stats no longer available as a control option
- No rebates for dual fuel thermostats and integrated controls
- Introduced rebates for Disadvantaged Communities (capped at \$6,250/project)
- Increased rebates for HPWH's (\$1,200/unit Market, \$1,700/unit LMI)
- No rebates for tankless water heaters
- No rebate assignment for HPWH only projects



What's
new?

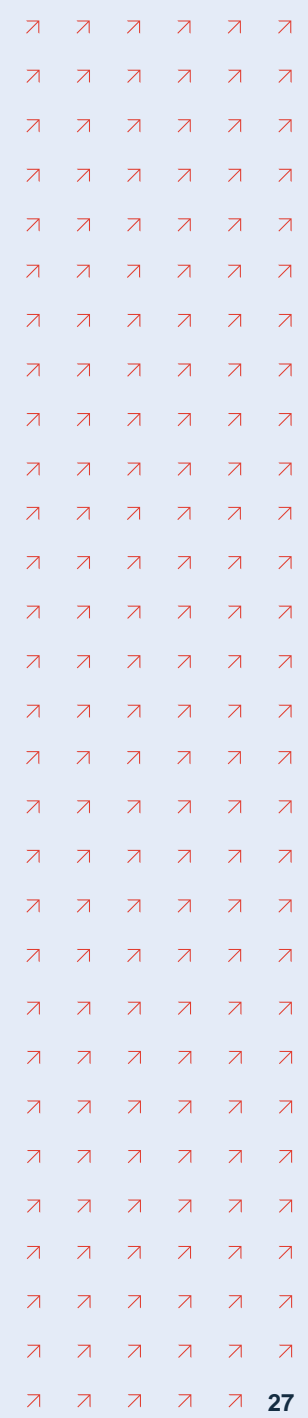
Home Comfort Programs

Whole-House Projects

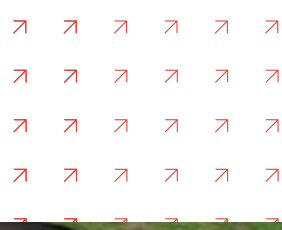
Eligible Equipment	Total Project Heating Tons*	Customer Rebate** (Market Rate)	Customer Rebate** (Disadvantaged Communities Rate)	Customer Rebate** (Income Eligible Rate)
Cold Climate Air Source Heat Pumps***	Ton 1	\$1,000/12,000 heating BTU	\$1,250/12,000 heating BTU	\$4,000/12,000 heating BTU
	Ton 2	\$1,000/12,000 heating BTU	\$1,250/12,000 heating BTU	\$3,000/12,000 heating BTU
	Ton 3	\$1,000/12,000 heating BTU	\$1,250/12,000 heating BTU	\$2,000/12,000 heating BTU
	Ton 4	\$1,000/12,000 heating BTU	\$1,250/12,000 heating BTU	\$1,000/12,000 heating BTU
Air to Water Heat Pumps	Ton 5	\$500/12,000 heating BTU	\$625/12,000 heating BTU	\$500/12,000 heating BTU
	Ton 6	\$500/12,000 heating BTU	\$625/12,000 heating BTU	\$500/12,000 heating BTU

Eligible Equipment

Dual Fuel Thermostats/ Integrated Controls	Dual fuel thermostats/integrated controls are required or existing fossil fuel heating systems must be removed. If there is an existing fossil fuel heating system, heat pump must be the primary heat system and fossil fuel is secondary.
--	---



Geothermal (GSHP) Program



Space Heating

Efficiency Requirements	Customer Rebate (Market Rate)	Customer Rebate (Income Eligible Rate)
Water to Air: Closed: EER \geq 17.1 and COP \geq 3.6 Open: EER \geq 21.1 and COP \geq 4.1	\$1,500/12,000 heating BTU (new)	\$3,000/12,000 heating BTU (new)
Water to Water: Closed: EER \geq 16.1 and COP \geq 3.1 Open: EER \geq 20.1 and COP \geq 3.5	\$500/12,000 heating BTU (retrofit)	\$1,000/12,000 heating BTU (retrofit)
DGX: EER \geq 16 and COP \geq 3.6		

Dedicated Water Heating

Efficiency Requirements	Customer Rebate (Market Rate)	Customer Rebate (Income Eligible Rate)
Water to Water: Closed: COP \geq 3.1 Open: COP \geq 3.5	\$1,000/12,000 heating BTU (new)	\$2,000/12,000 heating BTU (new)
	\$500/12,000 heating BTU (retrofit)	\$1,000/12,000 heating BTU (retrofit)

2025 Air to Water Heat Pump Rebates

Air to Water Heat Pumps → Rebates

- Rebates will be structured to align with Cold Climate Air Source Heat Pumps
- Market Rebates & Low-Income rebates available

Air to Water Heat Pumps → Eligibility

- Equipment must be sized for and meet 100%-120% of the full designed heating load
- Equipment must have a COP of 1.7 or greater at A5W110 (Ambient air 5F, Leaving Water Temperature 110F), and have a nominal cooling capacity $\leq 72,000$ btu

Air to Water Heat Pumps → Qualified Products List

- NYS has created a statewide Air to Water Heat Pump Qualified Product List
- <https://cleanheat.ny.gov/assets/pdf/NYS%20Clean%20Heat%20AWHP%20QPL%20-%20Nov-15-2024.pdf>



Home Energy Assessment (HEA) Program

Single-family residential accounts are eligible for 2 FREE in-home assessments

Home Energy Assessment (HEA) Includes

- Health and safety
- Combustion and carbon monoxide testing
- HEA Report
- \$20 Thank You Voucher to Marketplace
- Only BPI certified contractors participate
- Easy Online Application Process
- <https://pseghea.capturesportal.com/>



Online Application →



2025 COMING SOON

Home Heat Loss Awareness Program



Contribute and Save with MyHEAT

We're here to help you **save energy and money**, create a more comfortable home, and contribute to a more sustainable future with a wide range of programs, offers, and rebates to make your home more energy-efficient.

NEW for our Home Performance Partners!!

Please join us after the Partner Awards for a demo of this new technology

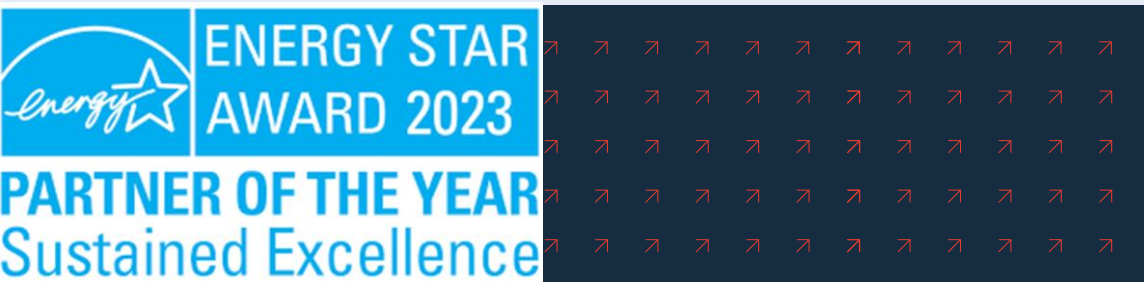




Home Performance Customer Eligibility

2025 Customer Eligibility Table and Measures Remain the Same

- Single-family homes in PSEG LI territory with a primary heating fuel of **oil, propane, or electric** are eligible for Market and LMI Rebates.
- Single-family homes in PSEG LI territory with a primary heating fuel of **natural gas AND central air conditioning servicing at least 50% of the home** are eligible for LMI Rebate.
- Combo Projects (Home Comfort + HPwES) **originating with a primary heating fuel of natural gas** are eligible for both Market and LMI Rebates.





2025 Customer Eligibility

Additional Terms and Conditions

- Insulation must be installed in conjunction with comprehensive air sealing.
- All ductwork in unconditioned space must be sealed.
- Windows are permitted with the installation of a Whole House Cold Climate Air Source Heat Pump and, at a minimum, insulation and air sealing.

PSEG Long Island Home Performance Eligible Rebate List			
Measure	Market rate	Market & Disadvantaged Community Rebate	Low Income & Low Income Disadvantaged Communities
Insulation	\$500	\$650	\$4650
Air Sealing	\$250	\$300	\$1000
Duct Sealing	\$250	\$300	\$600
Windows**	\$4	\$4	\$8

*LMI Rebates follow NYSERDA EmPower financial requirements with verifications completed by Energy Finance Solutions.
** Windows Rebate is Per Square Foot

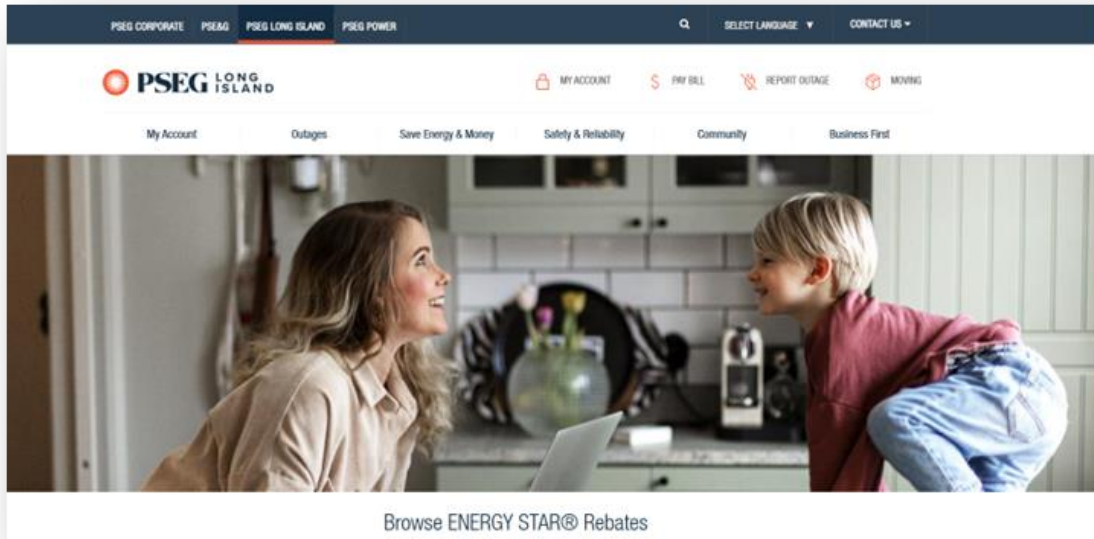
Home Performance for Natural Gas Market Rate Customer Rebates

Due to the delays experienced by National Grid, both National Grid and PSEG Long Island will collaborate to develop a solution that supports our residential weatherization contractors and customers for 2025. This partnership aims to address any challenges arising from the delays and ensure that we can effectively meet the needs of our customers and contractors.

We expect to have a weatherization rebate solution for natural gas customers rolled out in March 2025. Stay tuned!!



2025 Energy Efficient Products



Easy Online Application and Tools

- The EEP Program has gone paperless (as much as possible!)
- QR Code used to direct customers to Appliances & Rebates webpage
- Fillable PDFs available when needed

Product Tear Pads with QR codes located in retail stores

- Electric Dryers
- Most Efficient Washer
- Heat Pump Water Heaters
- Heat Pump Pool Heaters
- Induction Cooktops

2025 Energy Efficient Products ****NEW****

ENERGY STAR Induction Cooktops

- \$150 rebate
- On-Line Applications are available at appliance retail stores



Residential Energy Affordability Partnership

A FREE In-Home Energy Survey takes approximately 2 hours performed by a REAP

Technician and includes:

- Review of income eligibility documents for all household members (2025 Income Guidelines 80% SMI)
- Evaluation of electrical appliances to determine eligibility for an energy-efficient ENERGY STAR® replacement (Refrigerator, (2) Window AC, Dehumid, Air Purifer)
- Direct Installation of low flow water saving devices, night lights, LED's, pipe wrap, DHW blanket (electric only)
- Health & Safety Inspection – gas leak detection/combustion safety
- If qualified, installation of **Smart Programmable Thermostats** - at no cost to the customer!

AND THAT'S NOT ALL !!!



REAP 2025 Includes Even More.....

Customers who qualify and complete a REAP home energy survey visit may also receive:

- \$50 Bill Credit for qualified and completed REAP appointments
- An additional \$30 voucher to the PSEGLI Marketplace
- Free Weatherization covering:
 - Air and duct sealing and/or ~700 sq/ft attic insulation
 - Door sweeps
 - Attic hatch cover
 - Hot water heater blanket wrap



Need Assistance?



- Visit www.psegliny.com
- Contact our Infoline at 800-692-2626 (M-F 8 a.m. to 5 p.m.)

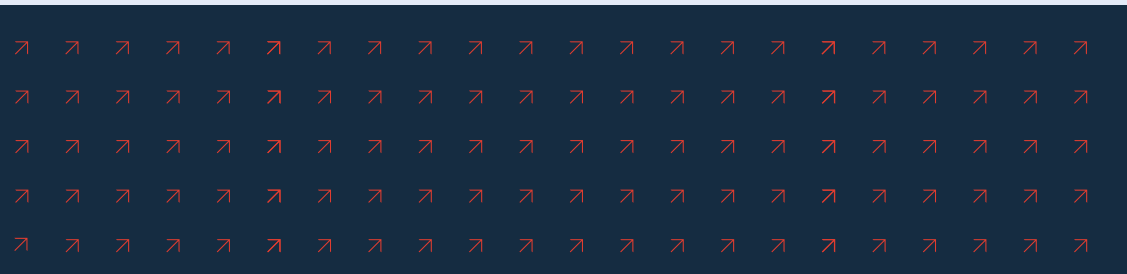
Project/Program Specific Inquiries (Email)

- Home Comfort → HomeComfortLI@PSEG.com
- Home Performance → HomePerformanceLI@PSEG.com
- Residential Products → MyRebateLI@PSEG.com
- REAP → REAPLI@PSEG.com
- Support → PSEGPartnerSupport@trccompanies.com

Contractor/Customer Open House

- Every Friday from 9 a.m. to 10 a.m.
395 North Service Road, Melville (Ste 409)

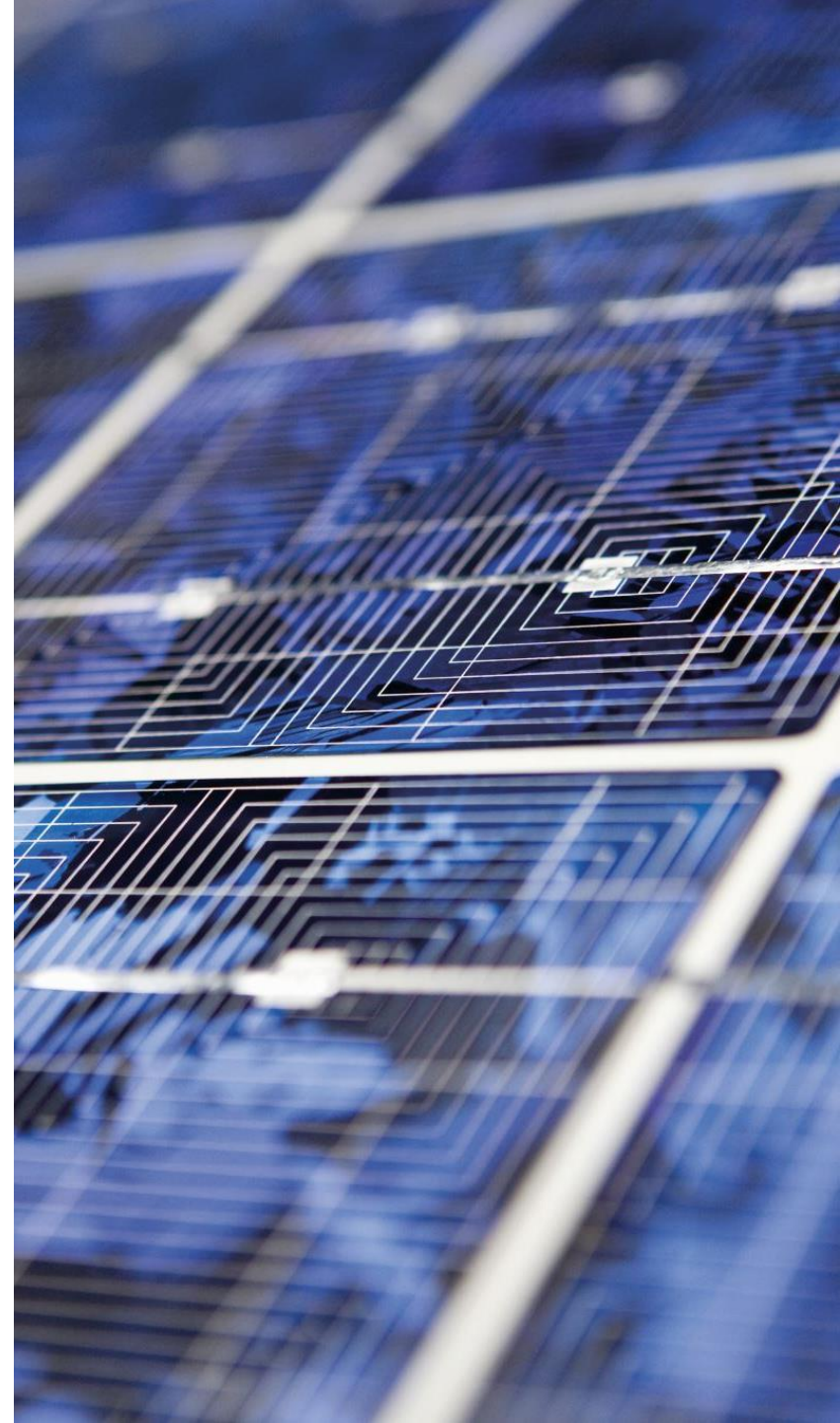
Or on Teams use QR code to access →





Partner Program Updates

Alex Valentino
Associate Director



2025 Partner Program

Apply to be a Program Partner today

New to 2025

- Online Partner Application!

2025 Partner Programs

- Prime Efficiency Partners
 - All Commercial
- Technical Assistance Partners
 - Engineering Studies, LEED
- Home Comfort Partners
 - Residential Heat Pumps
- Home Performance Partners
 - Residential Weatherization
- Energy Efficiency Products Partners
 - Heat Pump Pool Heaters & Heat Pump Water Heaters



Partner Tiers and Benefits		
Tier 4	20+ Projects*	- "Top Partner" designation on Website - Bi-annual Round table discussion
Tier 3	10-20 Projects*	- ACH Rebate Payments - Heat Pump Tool Reimbursement - Co-op Branding Reimbursement
Tier 2	5-10 Projects*	- PSEG Long Island Website Listing - The Switch is On Website Listing - Co-Branding Logo Use - Project/Customer Testimonials - Manual J/N Software Reimbursement
Tier 1	<5 Projects*	- Access to Rebates and Incentives - Access to Partner Portal - Access to Marketing Materials - Open House Support - Training Opportunities (as available)
<i>*Completed Projects within a Rolling 365 days</i>		

Partner Portal

Benefits

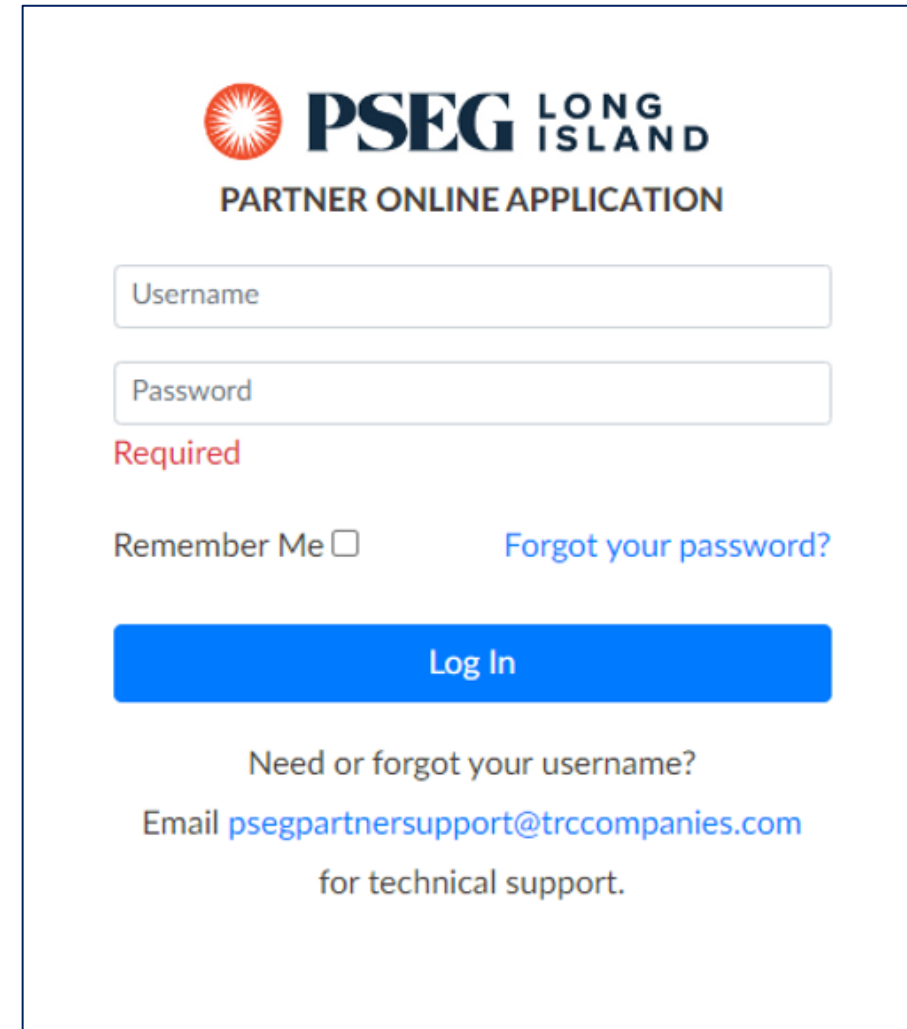
- No document restrictions
- 24/7 Access
- 15% Reduction in Project Approval time
- Able to look up projects' information and statuses
- Get updates from team on missing information
- 15% Reduction in Project Approval time

How to get access:

- Automatically get access during enrollment process

What's Next:

- Paperless Application (Home Comfort first)
- Reservation system for simpler application start



The screenshot shows the login interface for the PSEG Long Island Partner Online Application. At the top, there is the PSEG Long Island logo, which consists of a red sunburst icon followed by the text "PSEG LONG ISLAND" in a bold, sans-serif font. Below the logo, the text "PARTNER ONLINE APPLICATION" is displayed in a smaller, all-caps font. The login form includes two input fields: "Username" and "Password", both with light gray borders. Below the "Password" field, the word "Required" is written in red. To the left of the "Log In" button is a "Remember Me" checkbox, and to the right is a blue link that says "Forgot your password?". The "Log In" button is a solid blue rectangle with white text. Below the button, there is a line of text: "Need or forgot your username?" followed by an email address "Email psegpartnersupport@trccompanies.com" and the phrase "for technical support." in a smaller font.

Smart Tools Programs

New Smart Tools Eligible for Reimbursement

- Up to 75% cost coverage
- Added Weatherization Tier
- Includes Manual J/N Software options
- Includes both Residential and Commercial partners



Heat Pump Tools Tier – Appendix A

Tool Number	Tool Name	TrueTech Tools Website	Tool Reimbursement
1	Testo 570s Smart Vacuum Kit with Hoses - Smart Digital Manifold with Wireless Vacuum and Temperature Probes and Set of 4 Refrigerant Hoses	Link to Website	75% Up to \$900
2	Testo Smart Probes HVAC/R Complete Kit	Link to Website	75% Up to \$950
3	TEC Minneapolis DG-1000 Dual Channel Digital Pressure-Flow Gauge with BlueTooth	Link to Website	75% Up to \$1,300
4	Testo 560i Automatic Charging System with Digital Scale, Intelligent Valve and Case	Link to Website	75% Up to \$400
5	TEC Minneapolis Digital TrueFlow Solution Standard Kit with DG8 Manometer and All 8 Adapter Plates	Link to Website	75% Up to \$1,400
6	NAVAC NEF6LM Cordless Power Flaring Tool 3/4" Max OD	Link to Website	75% Up to \$350

Weatherization Tools Tier – Appendix B

Tool Number	Tool Name	TrueTech Tools Website	Tool Reimbursement
7	TEC Minneapolis Blower Door with DG-1000	Link to Website	75% Up to \$3,250
8	Sensit HXG-2D Digital Gas Leak Detector Methane	Link to Website	75% Up to \$450
9	Sensit P100 Personal Monitor - Carbon Monoxide (CO)	Link to Website	75% Up to \$200
10	The BPI Basics Kit with Sensit HXG-2D Gas Leak Detector and Sensit P100 Personal CO Monitor	Link to Website	75% Up to \$300
11	Next-Gen Testo 300 - Residential / Commercial Combustion Analyzer with Printer - Smoke Edition	Link to Website	75% Up to \$1,275
12	Testo 310 II - Residential Combustion Analyzer Printer Kit with Configurable Display and Smart App Functionality	Link to Website	75% Up to \$900

Co-Branding Guidelines

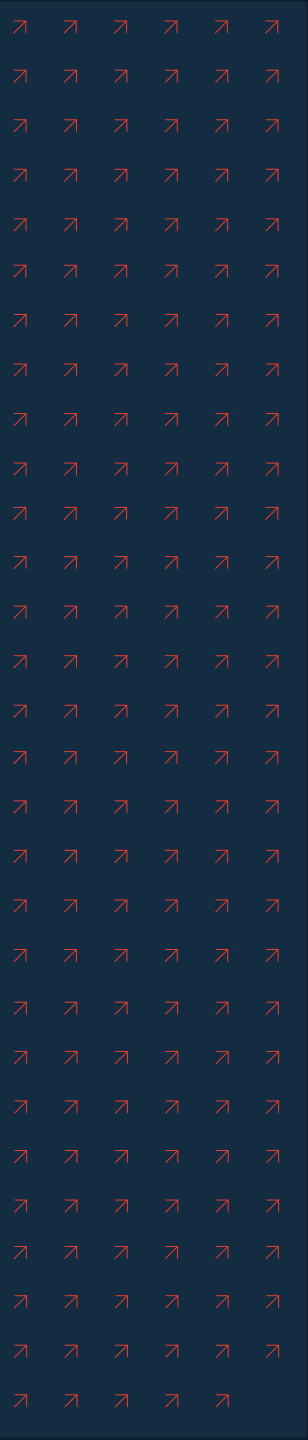
- After completing 5 projects, Partners will have the opportunity to use the PSEG Long Island Partner Logo
- All material must be approved by both TRC and PSEG Long Island prior to print
 - This includes Websites, Business Cards, Print advertisements, etc.
- Not included is the logo on Vehicles, Clothing, Badges or Giveaways



Co-op Marketing Program

PSEG Long Island will offer reimbursement for unique marketing campaigns that focus on the PSEG Long Island programs

- **Up to 50% cost coverage (max \$10,000 per year)**
- **All partners are eligible after completing 10 approved projects in a calendar year**
- **PSEG Long Island and TRC must approve the marketing piece prior to mailing or posting**
- **For more information reach out to PSEGPartnerSupport@trccompanies.com**



The Switch is On

TRC and the Building Decarbonization Coalition are partnering to build an educational website targeted to promote our residential electrification program.

Digital Platform

- Customers can research the pros and cons of electric equipment, view testimonials and other resources

Contractor Finder

- Customers can find and contact contractors directly through this website

Incentive Finder

- Customers can self determine what rebates and incentives they may qualify for. This includes PSEG Long Island rebates, Federal and State incentives and even local incentives

INCENTIVE LOOKUP FOR CUSTOMERS

INCENTIVE TYPE ▾

TAX CREDIT

EQUIPMENT TYPE ▾

Choose ▾

INCENTIVE PROVIDER ▾

Choose ▾

BUILDING TYPE ▾

SINGLE-FAMILY

MULTI-FAMILY

INCOME QUALIFYING? ▾

NO

YES

Need Assistance?



- Visit www.psegliny.com
- Contact our Infoline at 800-692-2626 (M-F 8 a.m. to 5 p.m.)

Project/Program Specific Inquiries (Email)

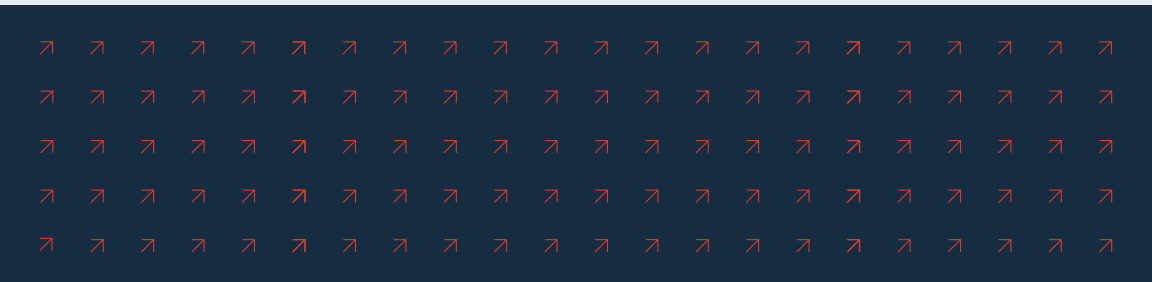
- Commercial & Multi-family → CEPLI@PSEG.com
- Home Comfort → HomeComfortLI@PSEG.com
- Home Performance → HomePerformanceLI@PSEG.com
- Residential Products → MyRebateLI@PSEG.com
- REAP → REAPLI@PSEG.com
- Support → PSEGPartnerSupport@trccompanies.com

Contractor/Customer Open House

- Every Friday from 9 a.m. to 10 a.m.

395 North Service Road, Melville (Ste 409)

Or on Teams use QR code to access →





Questions?

Please submit questions on index card and hand to your PSEG Long Island rep seated at your table.



Partner Awards

Matthew Connors & Josh Ebner



C Lighting Corp.

PSEG Long Island
recognizes

C Lighting Corp.

With the

Rising Star Award

Lighting Projects

A green silhouette of an electrical plug, positioned at the bottom left of the award graphic.

2024

Liberty LED

PSEG Long Island
recognizes

Liberty LED

With the Award for

**Most Lighting Projects and
Fastest Turnaround**

Lighting Projects



2024

Michaels Electric Supply

PSEG Long Island
recognizes

**Michaels Electric
Supply**

With the Award for

**Top Distributor
Most Projects and Savings**

Lighting Projects



2024

Alta Industrial Equipment

**PSEG Long Island
recognizes**

**Alta Industrial
Equipment**

With the Award for

**Top Lighting Performer
Largest Energy Savings**

Lighting Projects

A green icon of a two-prong electrical plug, positioned at the bottom left of the award box.

2024

Stratco Property Solutions

PSEG Long Island
recognizes

Stratco Property Solutions

With the Award for

**Top Performer
Energy Savings
Multiple Measures**

Commercial Projects



2024

Quincy Compressor

PSEG Long Island
recognizes

Quincy Compressor

With the
Top Performer Award

Compressor Projects



2024

Long Island Air Conditioning & Appliances Inc.

PSEG Long Island
recognizes

**Long Island Air Conditioning
& Appliances Inc.**

With the Award for

**Fastest Turnaround for
HVAC Projects**

HVAC Projects



2024

Jen Air

PSEG Long Island
recognizes

Jen Air

With the

**Quality HVAC Submittals
Award**

Commercial Projects

A large green graphic consisting of several stylized leaves and a power plug icon at the bottom left, framing the central text box.

2024

Green Rebates, LLC.

PSEG Long Island
recognizes

Green Rebates, LLC.

With the Award for

Largest Overall Project

Commercial Projects

A large green graphic consisting of several stylized leaves and a plug icon at the bottom left, all arranged in a circular pattern around the central text box.

2024

Orange Energy Solutions

PSEG Long Island
recognizes

**Orange Energy
Solutions**

With the

Rookie of the Year Award

Refrigeration Projects



2024

Green Team LI

PSEG Long Island
recognizes

Green Team LI

With the Award for

**Most Whole-House
Combination Projects**

Residential Programs

A green icon of a two-prong electrical plug, positioned to the left of the year "2024".

2024

Central Air Systems Inc.

PSEG Long Island
recognizes

Central Air Systems Inc.

With the Award for

**Most Installed Air Source Heat
Pump Projects (Non-LMI)**

Residential Programs

A large, stylized green leaf graphic that curves around the central text box, with a green electrical plug icon at the bottom right.

2024

Hi Tech HVAC Services Corp.

PSEG Long Island
recognizes

**Hi Tech HVAC
Services Corp.**

With the Award for

**Most Installed Air Source
Heat Pump Projects (LMI)**

Residential Programs



2024

Energywise Inc.

PSEG Long Island
recognizes

Energywise Inc.

With the Award for

**Most Geothermal
Project Savings**

Residential Programs

A large green graphic consisting of several stylized leaves and a plug icon at the bottom, framing the central text box.

2024



Tony's Licensed Heating & Air Conditioning Inc.

PSEG Long Island
recognizes
**Tony's Licensed Heating &
Air Conditioning Inc.**
With the
Rising Star Award
Residential Programs

2024

NYS Energy Solutions

PSEG Long Island
recognizes

NYS Energy Solutions

With the Award for

**Most Savings
Home Performance**

Residential Programs

A large green graphic consisting of several stylized leaves and a power plug at the bottom left, framing the central text box.

2024

Energy Haus Inc.



PSEG Long Island
recognizes

Energy Haus Inc.

With the Award for

**Most Cost-Effective Home
Performance Projects**

Residential Programs

2024

Green Team LI

A large green graphic on the right side of the slide. It features several stylized green leaves at the top and a green electrical plug at the bottom. A white rectangular box is centered within the graphic, containing text. The year "2024" is written in red at the bottom right of the graphic.

PSEG Long Island
recognizes

Green Team LI

With the Award for

**Most Installed
Heat Pump Water Heaters**

Residential Programs

2024



Thank
you